

An abstract painting with a complex, layered composition. The top portion is dominated by soft, ethereal tones of white, light blue, and pale green, suggesting a misty or dreamlike atmosphere. Below this, the middle and lower sections are filled with more dynamic and textured brushstrokes. Warm, golden-brown and ochre hues are interspersed with darker, more somber tones of grey, black, and deep blue. The bottom right corner features a prominent, vibrant red area with a distinct, fine-lined texture, possibly representing a piece of fabric or a specific material. The overall effect is one of depth and emotional intensity, characteristic of a journey into a fantastical or subconscious realm.

Lisa Etterich *LE*

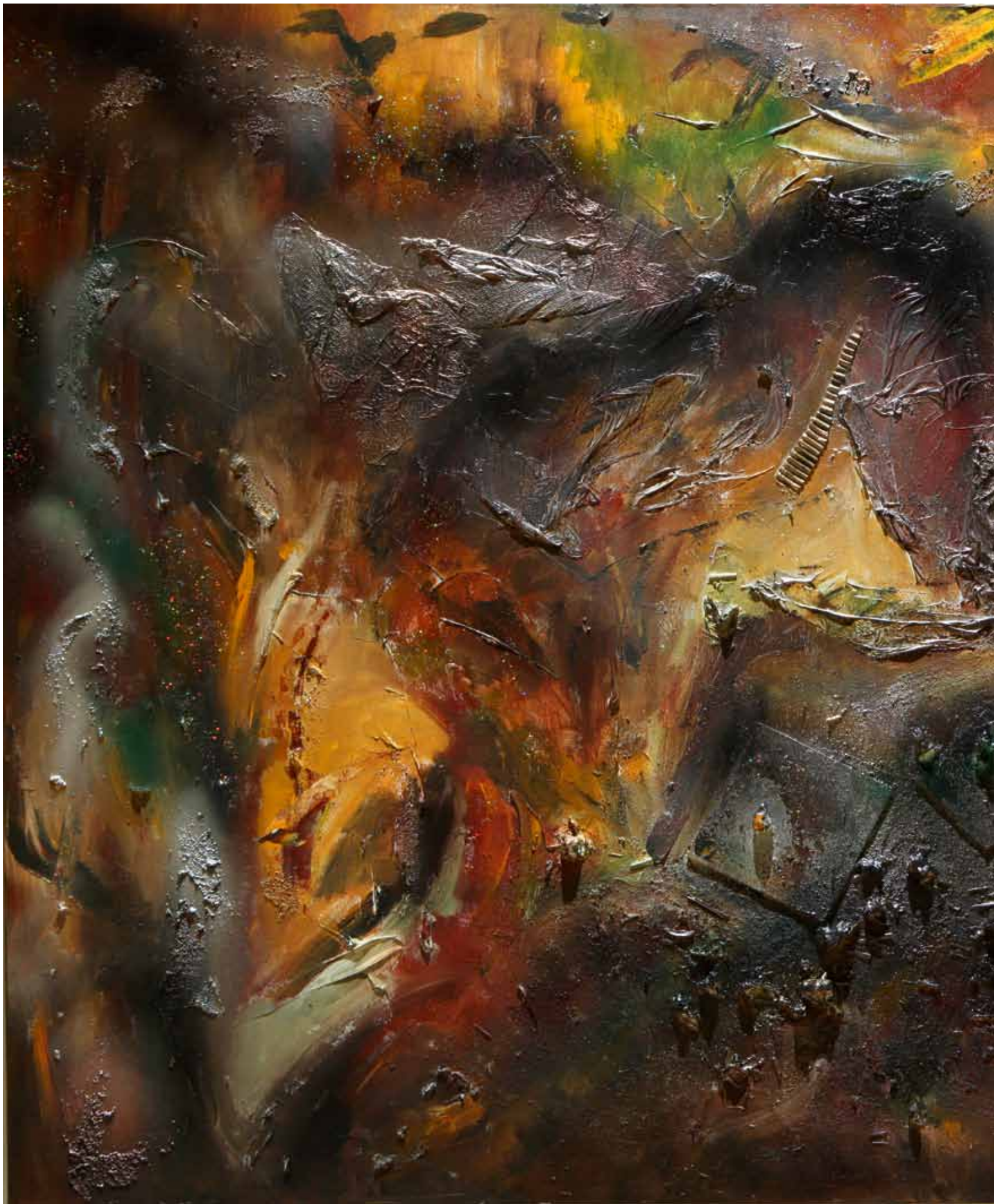
A JOURNEY INTO NEVERLAND

梦幻岛之旅



Bushido
武士道
2012
Diptych
Mixed technique
80 x 100 cm (each)







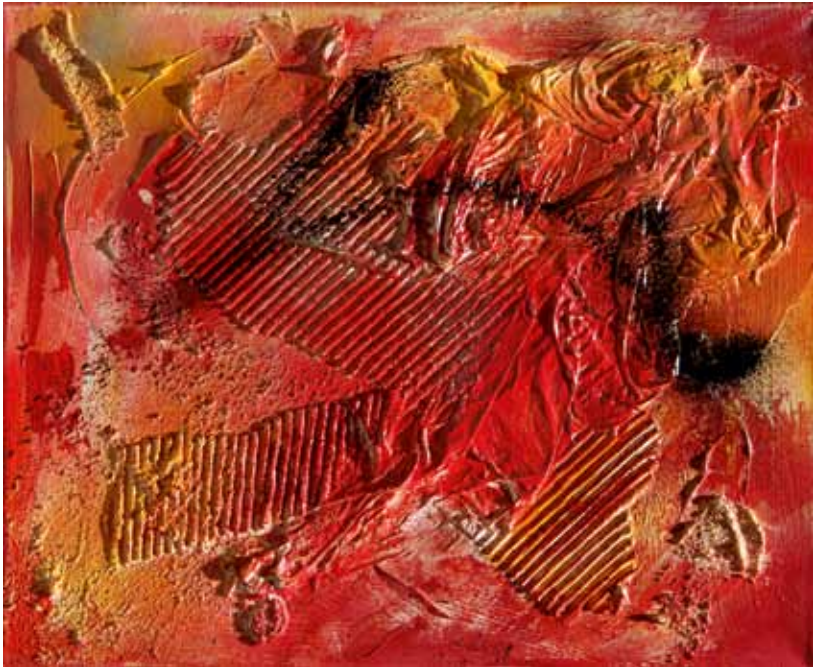
Mythical Creatures

八大神兽

2012

Mixed technique

120 x 160 cm





Symphony in Five Movements
五章交响乐
Polyptych
2012
Mixed technique
all pieces together: 250 x 150 cm



Embers

余煨

2012

Mixed technique

50 x 150 cm

